

**DPS (C900) Price List - Effective 7/1/19**

**Ductile Iron Bends (Cat. A)**  
Page 3



**Ductile Iron Tees (Cat. A)**  
Page 4-5




**Ductile Iron Reducers (Cat. A)**  
Page 5-7



**Plugs (Cat. A)**  
Page 7



**Caps (Cat. A)**  
Page 8



**LHD-Series Restraints (Cat. B)**  
Pages 9




**LBD-Series Restraints (Cat. B)**  
Page 9



**LGKD-Series Restraints (Cat. B)**  
Pages 9




**LGD-Series Restraints (Cat. B)**  
Page 9



**LMJD-Series Restraints (Cat. B)**  
Page 9



**Saddles (Cat. C)**  
Page 11



**Gate Valves (Cat D.)**  
Page 12



**TABLE OF CONTENTS**For latest update and additions visit [www.leemco.com](http://www.leemco.com)

	Page	Discount Category
<b>Ductile Iron Fittings</b>		
Bends	3	A
Service (Tapped) Tees	4	A
Tees (Bell x Bell x Bell)	4,5	A
Concentric (Bell x Bell) Reducers	5	A
SBR (Spigot x Bell) Reducers	6,7	A
Male Adapters (Bell x MPT)	7	A
Plugs	7	A
Tapped Plugs	7	A
Caps	8	A
Tapped Caps	8	A
Links and Gaskets	8	A
<b>Joint Restraints</b>		
LHD-Series (Pipe to Fitting)	9	B
LBD-Series (Pipe to Pipe)	9	B
LGKD-Series (Pipe to Fitting) For Mainline Gate Valves	9	B
LGD-Series (Pipe to Pipe) For Mainline Gate Valves	9	B
LMJD-Series (Pipe to Valve) For MJ Fittings & Valves	9	B
Joint Restraint Parts (Tie-Bars & Links)	10	B
Stainless Steel Hardware (Bolt, Nut, Washer Sets)	10	B
<b>Tools</b>		
Hole Saw (1-1/2" Saddle Port)	10	B
Hole Saw Pilot Bit	10	B
Torque Wrench (20 - 150 LBS.)	10	B
Deburring Tool	10	B
<b>Saddles</b>		
RSST-Series FPT Saddles w/ SS Single Strap	11	C
RSDT-Series FPT Saddles w/ SS Double Strap	11	C
Stainless Steel Flanged Ball Valves	11	C
<b>Mainline Resilient Wedge Gate Valves</b>		
LMV (MJ x MJ)	12	D
LMV (Flange x Flange)	12	D
<b>Specifications</b>	13	
<b>Installation Guide</b>	14,15,16,17	
<b>Conditions of Sale</b>	20	

**NOTE:**

**All Leemco DPS (C900) products have a fusion-bonded epoxy coating on the interior and exterior surfaces. (See specs on Page 13)**



*Tapered bell allows 80-100 degree pipe deflection*

**90-Degree Bend (1/4 Turn)...80-100 deflection**

<b>Model No.</b>	<b>Description</b>	<b>Wt. lbs.</b>	<b>List Price</b>
SBD-490B	4, 90 Bend (D-D)	25	\$165.00
SBD-690B	6, 90 Bend (D-D)	45	\$297.00
SBD-890B	8, 90 Bend (D-D)	75	\$373.00
SBD-1090B	10, 90 Bend (D-D)	110	\$705.00
SBD-1290B	12, 90 Bend (D-D)	150	\$762.00
SBD-1490B	14, 90 Bend (D-D)	220	\$1,117.00
SBD-1690B	16, 90 Bend (D-D)	300	\$1,483.00
SBD-1890B	18, 90 Bend (D-D)	450	\$2,689.00
SBD-2090B	20, 90 Bend (D-D)	520	\$3,228.00
SBD-2490B	24, 90 Bend (D-D)	675	\$4,624.00



*Tapered bell allows 12-32 degree pipe deflection*

**22-Degree Bend (1/16 Turn)...12-32 deflection**

<b>Model No.</b>	<b>Description</b>	<b>Wt. lbs.</b>	<b>List Price</b>
SBD-422B	4, 22 Bend (D-D)	25	\$150.00
SBD-622B	6, 22 Bend (D-D)	40	\$210.00
SBD-822B	8, 22 Bend (D-D)	55	\$345.00
SBD-1022B	10, 22 Bend (D-D)	75	\$562.00
SBD-1222B	12, 22 Bend (D-D)	115	\$678.00
SBD-1422B	14, 22 Bend (D-D)	180	\$1,045.00
SBD-1622B	16, 22 Bend (D-D)	240	\$1,422.00
SBD-1822B	18, 22 Bend (D-D)	265	\$2,339.00
SBD-2022B	20, 22 Bend (D-D)	325	\$2,842.00
SBD-2422B	24, 22 Bend (D-D)	385	\$3,843.00

**NOTE:** All Leemco DPS (C900) products have a fusion-bonded epoxy coating on the interior and exterior surfaces.

**NOTE:** D = Ductile Pipe Size (DPS)



*Tapered bell allows 35-55 degree pipe deflection*

**45-Degree Bend (1/8 Turn)...35-55 deflection**

<b>Model No.</b>	<b>Description</b>	<b>Wt. lbs.</b>	<b>List Price</b>
SBD-445B	4, 45 Bend (D-D)	25	\$155.00
SBD-645B	6, 45 Bend (D-D)	50	\$228.00
SBD-845B	8, 45 Bend (D-D)	65	\$351.00
SBD-1045B	10, 45 Bend (D-D)	90	\$529.00
SBD-1245B	12, 45 Bend (D-D)	120	\$696.00
SBD-1445B	14, 45 Bend (D-D)	225	\$1,089.00
SBD-1645B	16, 45 Bend (D-D)	255	\$1,464.00
SBD-1845B	18, 45 Bend (D-D)	330	\$2,383.00
SBD-2045B	20, 45 Bend (D-D)	400	\$2,883.00
SBD-2445B	24, 45 Bend (D-D)	450	\$3,928.00



*Tapered bell allows 1-21 degree pipe deflection*

**11-Degree Bend (1/32 Turn)...1-21 deflection**

<b>Model No.</b>	<b>Description</b>	<b>Wt. lbs.</b>	<b>List Price</b>
SBD-411B	4, 11 Bend (D-D)	23	\$144.00
SBD-611B	6, 11 Bend (D-D)	48	\$203.00
SBD-811B	8, 11 Bend (D-D)	62	\$328.00
SBD-1011B	10, 11 Bend (D-D)	85	\$562.00
SBD-1211B	12, 11 Bend (D-D)	105	\$670.00
SBD-1411B	14, 11 Bend (D-D)	175	\$997.00
SBD-1611B	16, 11 Bend (D-D)	225	\$1,330.00
SBD-1811B	18, 11 Bend (D-D)	305	\$2,299.00
SBD-2011B	20, 11 Bend (D-D)	375	\$2,716.00
SBD-2411B	24, 11 Bend (D-D)	430	\$3,635.00

**NOTE:** D = Ductile Pipe Size (DPS)



Taps are Female NPT

**Service Tee (Tapped Tee)**

Model No.	Description	Wt. lbs.	List Price
SBD-404ST	4 x 2 Service Tee	30	\$160.00
SBD-406ST	4 x 3 Service Tee	30	\$160.00
SBD-604ST	6 x 2 Service Tee	40	\$252.00
SBD-606ST	6 x 3 Service Tee	40	\$252.00
SBD-804ST	8 x 2 Service Tee	65	\$328.00
SBD-806ST	8 x 3 Service Tee	65	\$328.00
SBD-1004ST	10 x 2 Service Tee	75	\$586.00
SBD-1006ST	10 x 3 Service Tee	75	\$586.00
SBD-1204ST	12 x 2 Service Tee	120	\$663.00
SBD-1206ST	12 x 3 Service Tee	120	\$663.00
SBD-1404ST	14 x 2 Service Tee	180	\$1,088.00
SBD-1406ST	14 x 3 Service Tee	180	\$1,088.00
SBD-1604ST	16 x 2 Service Tee	225	\$1,422.00
SBD-1606ST	16 x 3 Service Tee	225	\$1,422.00
SBD-1806ST	18 x 3 Service Tee	250	\$1,757.00
SBD-2006ST	20 x 3 Service Tee	345	\$2,090.00
SBD-2406ST	24 x 3 Service Tee	450	\$2,424.00

**NOTE: For other tap sizes add \$10.00 to the list price and specify size of tap needed.**



**Coupling (not suited for repairs)**

Model No.	Description	Wt. lbs.	List Price
SBD-44C	4, Coupling (D-D)	30	\$180.00
SBD-66C	6, Coupling (D-D)	40	\$272.00
SBD-88C	8, Coupling (D-D)	65	\$348.00
SBD-1010C	10, Coupling (D-D)	75	\$606.00
SBD-1212C	12, Coupling (D-D)	120	\$682.00
SBD-1414C	14, Coupling (D-D)	180	\$1,089.00
SBD-1616C	16, Coupling (D-D)	225	\$1,422.00
SBD-1818C	18, Coupling (D-D)	252	\$1,783.00
SBD-2020C	20, Coupling (D-D)	347	\$2,116.00
SBD-2424C	24, Coupling (D-D)	452	\$2,450.00

**NOTE: D = Ductile Pipe Size (DPS)**



**Category A**

**Bell x Bell x Bell Tee**

Model No.	Description	Wt. lbs.	List Price
SBD-444T	4 x 4 x 4 Tee (D-D-D)	42	\$269.00
SBD-646T	6 x 4 x 6 Tee (D-D-D)	68	\$600.00
SBD-648T	6 x 4 x 8 Tee (D-D-D)	203	\$1,058.00
SBD-664T	6 x 6 x 4 Tee (D-D-D)	55	\$339.00
SBD-666T	6 x 6 x 6 Tee (D-D-D)	65	\$377.00
SBD-668T	6 x 6 x 8 Tee (D-D-D)	206	\$1,043.00
SBD-6610T	6 x 6 x 10 Tee (D-D-D)	310	\$1,498.00
SBD-884T	8 x 8 x 4 Tee (D-D-D)	75	\$416.00
SBD-866T	8 x 6 x 6 Tee (D-D-D)	206	\$1,043.00
SBD-868T	8 x 6 x 8 Tee (D-D-D)	158	\$795.00
SBD-886T	8 x 8 x 6 Tee (D-D-D)	158	\$795.00
SBD-888T	8 x 8 x 8 Tee (D-D-D)	110	\$544.00
SBD-8810T	8 x 8 x 10 Tee (D-D-D)	315	\$1,583.00
SBD-8812T	8 x 8 x 12 Tee (D-D-D)	380	\$1,865.00
SBD-10104T	10 x 10 x 4 Tee (D-D-D)	100	\$673.00
SBD-10106T	10 x 10 x 6 Tee (D-D-D)	243	\$1,145.00
SBD-10108T	10 x 10 x 8 Tee (D-D-D)	245	\$1,171.00
SBD-101010T	10 x 10 x 10 Tee (D-D-D)	175	\$796.00
SBD-101012T	10 x 10 x 12 Tee (D-D-D)	406	\$1,899.00
SBD-101014T	10 x 10 x 14 Tee (D-D-D)	530	\$2,399.00
SBD-12124T	12 x 12 x 4 Tee (D-D-D)	67	\$750.00
SBD-12126T	12 x 12 x 6 Tee (D-D-D)	294	\$1,397.00
SBD-12128T	12 x 12 x 8 Tee (D-D-D)	295	\$1,456.00
SBD-121210T	12 x 12 x 10 Tee (D-D-D)	308	\$1,471.00
SBD-121212T	12 x 12 x 12 Tee (D-D-D)	210	\$846.00
SBD-14144T	14 x 14 x 4 Tee (D-D-D)	117	\$1,175.00
SBD-14146T	14 x 14 x 6 Tee (D-D-D)	450	\$2,783.00
SBD-14148T	14 x 14 x 8 Tee (D-D-D)	450	\$2,808.00
SBD-141410T	14 x 14 x 10 Tee (D-D-D)	420	\$2,432.00
SBD-141412T	14 x 14 x 12 Tee (D-D-D)	425	\$2,500.00
SBD-141414T	14 x 14 x 14 Tee (D-D-D)	320	\$1,756.00
SBD-16164T	16 x 16 x 4 Tee (D-D-D)	243	\$1,509.00
SBD-16166T	16 x 16 x 6 Tee (D-D-D)	600	\$3,068.00
SBD-16168T	16 x 16 x 8 Tee (D-D-D)	600	\$3,326.00
SBD-161610T	16 x 16 x 10 Tee (D-D-D)	545	\$2,966.00
SBD-161612T	16 x 16 x 12 Tee (D-D-D)	555	\$3,033.00
SBD-161614T	16 x 16 x 14 Tee (D-D-D)	575	\$3,050.00
SBD-161616T	16 x 16 x 16 Tee (D-D-D)	425	\$2,090.00
SBD-18184T	18 x 18 x 4 Tee (D-D-D)	203	\$1,843.00
SBD-18186T	18 x 18 x 6 Tee (D-D-D)	745	\$4,604.00
SBD-18188T	18 x 18 x 8 Tee (D-D-D)	745	\$4,662.00

**NOTE: D = Ductile Pipe Size (DPS)**



**Bell x Bell x Bell Tee (Continued)**

<b>Model No.</b>	<b>Description</b>	<b>Wt. lbs.</b>	<b>List Price</b>
SBD-181810T	18 x 18 x 10 Tee (D-D-D)	760	\$4,929.00
SBD-181812T	18 x 18 x 12 Tee (D-D-D)	662	\$4,252.00
SBD-181814T	18 x 18 x 14 Tee (D-D-D)	678	\$4,419.00
SBD-181816T	18 x 18 x 16 Tee (D-D-D)	687	\$4,586.00
SBD-181818T	18 x 18 x 18 Tee (D-D-D)	485	\$2,424.00
SBD-20204T	20 x 20 x 4 Tee (D-D-D)	845	\$2,177.00
SBD-20206T	20 x 20 x 6 Tee (D-D-D)	845	\$7,109.00
SBD-20208T	20 x 20 x 8 Tee (D-D-D)	845	\$7,168.00
SBD-202010T	20 x 20 x 10 Tee (D-D-D)	860	\$7,751.00
SBD-202012T	20 x 20 x 12 Tee (D-D-D)	660	\$6,757.00
SBD-202014T	20 x 20 x 14 Tee (D-D-D)	789	\$7,092.00
SBD-202016T	20 x 20 x 16 Tee (D-D-D)	845	\$9,589.00
SBD-202018T	20 x 20 x 18 Tee (D-D-D)	870	\$7,425.00
SBD-202020T	20 x 20 x 20 Tee (D-D-D)	550	\$4,596.00
SBD-24244T	24 x 24 x 4 Tee (D-D-D)	340	\$7,561.00
SBD-24246T	24 x 24 x 6 Tee (D-D-D)	1225	\$12,220.00
SBD-24248T	24 x 24 x 8 Tee (D-D-D)	1225	\$11,786.00
SBD-242410T	24 x 24 x 10 Tee (D-D-D)	1200	\$11,392.00
SBD-242412T	24 x 24 x 12 Tee (D-D-D)	1200	\$11,444.00
SBD-242414T	24 x 24 x 14 Tee (D-D-D)	1095	\$10,732.00
SBD-242416T	24 x 24 x 16 Tee (D-D-D)	1090	\$13,063.00
SBD-242418T	24 x 24 x 18 Tee (D-D-D)	1110	\$10,900.00
SBD-242420T	24 x 24 x 20 Tee (D-D-D)	1110	\$11,068.00
SBD-242424T	24 x 24 x 24 Tee (D-D-D)	790	\$7,477.00

**NOTE: All Leemco DPS (C900) products have a fusion-bonded epoxy coating on the interior and exterior surfaces.**

**NOTE: D = Ductile Pipe Size (DPS)**



**Category A**

**Bell x Bell (Concentric) Reducer**

<b>Model No.</b>	<b>Description</b>	<b>Wt. lbs.</b>	<b>List Price</b>
SBD-64R	6 x 4 Bell Reducer (D-D)	74	\$477.00
SBD-84R	8 x 4 Bell Reducer (D-D)	113	\$595.00
SBD-86R	8 x 6 Bell Reducer (D-D)	116	\$576.00
SBD-104R	10 x 4 Bell Reducer (D-D)	148	\$924.00
SBD-106R	10 x 6 Bell Reducer (D-D)	161	\$937.00
SBD-108R	10 x 8 Bell Reducer (D-D)	163	\$963.00
SBD-124R	12 x 4 Bell Reducer (D-D)	185	\$999.00
SBD-126R	12 x 6 Bell Reducer (D-D)	202	\$1,037.00
SBD-128R	12 x 8 Bell Reducer (D-D)	203	\$1,070.00
SBD-1210R	12 x 10 Bell Reducer (D-D)	216	\$1,089.00
SBD-146R	14 x 6 Bell Reducer (D-D)	310	\$2,115.00
SBD-148R	14 x 8 Bell Reducer (D-D)	315	\$2,210.00
SBD-1410R	14 x 10 Bell Reducer (D-D)	285	\$1,764.00
SBD-1412R	14 x 12 Bell Reducer (D-D)	295	\$1,831.00
SBD-166R	16 x 6 Bell Reducer (D-D)	410	\$2,649.00
SBD-168R	16 x 8 Bell Reducer (D-D)	410	\$3,117.00
SBD-1610R	16 x 10 Bell Reducer (D-D)	355	\$2,683.00
SBD-1612R	16 x 12 Bell Reducer (D-D)	365	\$2,365.00
SBD-1614R	16 x 14 Bell Reducer (D-D)	385	\$2,383.00
SBD-186R	18 x 6 Bell Reducer (D-D)	515	\$3,936.00
SBD-188R	18 x 8 Bell Reducer (D-D)	515	\$4,553.00
SBD-1810R	18 x 10 Bell Reducer (D-D)	530	\$4,260.00
SBD-1812R	18 x 12 Bell Reducer (D-D)	435	\$3,585.00
SBD-1814R	18 x 14 Bell Reducer (D-D)	450	\$3,751.00
SBD-1816R	18 x 16 Bell Reducer (D-D)	460	\$3,918.00
SBD-206R	20 x 6 Bell Reducer (D-D)	640	\$4,604.00
SBD-208R	20 x 8 Bell Reducer (D-D)	640	\$4,662.00
SBD-2010R	20 x 10 Bell Reducer (D-D)	655	\$4,678.00
SBD-2012R	20 x 12 Bell Reducer (D-D)	555	\$4,253.00
SBD-2014R	20 x 14 Bell Reducer (D-D)	650	\$4,586.00
SBD-2016R	20 x 16 Bell Reducer (D-D)	640	\$7,083.00
SBD-2018R	20 x 18 Bell Reducer (D-D)	670	\$8,333.00
SBD-246R	24 x 6 Bell Reducer (D-D)	885	\$6,709.00
SBD-248R	24 x 8 Bell Reducer (D-D)	885	\$6,732.00
SBD-2410R	24 x 10 Bell Reducer (D-D)	860	\$6,357.00
SBD-2412R	24 x 12 Bell Reducer (D-D)	860	\$6,424.00
SBD-2414R	24 x 14 Bell Reducer (D-D)	755	\$5,680.00
SBD-2416R	24 x 16 Bell Reducer (D-D)	750	\$8,011.00
SBD-2418R	24 x 18 Bell Reducer (D-D)	770	\$5,848.00
SBD-2420R	24 x 20 Bell Reducer (D-D)	770	\$6,013.00

**NOTE: D = Ductile Pipe Size (DPS)**



Spigot x Bell Reducer (SBR)

Model No.	Description	Wt. lbs.	List Price
SBD-41SBR-A	4 x 2 SBR Reducer (D-I)	17	\$173.00
SBD-42SBR-A	4 x 2.5 SBR Reducer (D-I)	19	\$168.00
SBD-43SBR-A	4 x 3 SBR Reducer (D-I)	21	\$195.00
SBD-44SBR-A	4 x 4 SBR Reducer (D-I)	24	\$210.00
<b>SBD-44SBR</b>	<b>4 x 4 SBR Reducer (D-D)</b>	<b>24</b>	<b>\$210.00</b>
SBD-61SBR-A	6 x 2 SBR Reducer (D-I)	20	\$192.00
SBD-62SBR-A	6 x 2.5 SBR Reducer (D-I)	22	\$206.00
SBD-63SBR-A	6 x 3 SBR Reducer (D-I)	24	\$215.00
SBD-64SBR-A	6 x 4 SBR Reducer (D-I)	27	\$222.00
<b>SBD-64SBR</b>	<b>6 x 4 SBR Reducer (D-D)</b>	<b>26</b>	<b>\$226.00</b>
SBD-81SBR-A	8 x 2 SBR Reducer (D-I)	31	\$233.00
SBD-82SBR-A	8 x 2.5 SBR Reducer (D-I)	33	\$248.00
SBD-83SBR-A	8 x 3 SBR Reducer (D-I)	35	\$256.00
SBD-84SBR-A	8 x 4 SBR Reducer (D-I)	38	\$265.00
<b>SBD-84SBR</b>	<b>8 x 4 SBR Reducer (D-D)</b>	<b>45</b>	<b>\$268.00</b>
<b>SBD-86SBR</b>	<b>8 x 6 SBR Reducer (D-D)</b>	<b>48</b>	<b>\$251.00</b>
SBD-101SBR-A	10 x 2 SBR Reducer (D-I)	48	\$306.00
SBD-102SBR-A	10 x 2.5 SBR Reducer (D-I)	50	\$319.00
SBD-103SBR-A	10 x 3 SBR Reducer (D-I)	52	\$328.00
SBD-104SBR-A	10 x 4 SBR Reducer (D-I)	55	\$336.00
<b>SBD-104SBR</b>	<b>10 x 4 SBR Reducer (D-D)</b>	<b>55</b>	<b>\$339.00</b>
<b>SBD-106SBR</b>	<b>10 x 6 SBR Reducer (D-D)</b>	<b>68</b>	<b>\$352.00</b>
<b>SBD-108SBR</b>	<b>10 x 8 SBR Reducer (D-D)</b>	<b>70</b>	<b>\$377.00</b>
SBD-121SBR-A	12 x 2 SBR Reducer (D-I)	60	\$339.00
SBD-122SBR-A	12 x 2.5 SBR Reducer (D-I)	62	\$352.00
SBD-123SBR-A	12 x 3 SBR Reducer (D-I)	64	\$362.00
SBD-124SBR-A	12 x 4 SBR Reducer (D-I)	67	\$369.00
<b>SBD-124SBR</b>	<b>12 x 4 SBR Reducer (D-D)</b>	<b>67</b>	<b>\$373.00</b>
<b>SBD-126SBR</b>	<b>12 x 6 SBR Reducer (D-D)</b>	<b>84</b>	<b>\$377.00</b>
<b>SBD-128SBR</b>	<b>12 x 8 SBR Reducer (D-D)</b>	<b>85</b>	<b>\$411.00</b>
<b>SBD-1210SBR</b>	<b>12 x 10 SBR Reducer (D-D)</b>	<b>98</b>	<b>\$428.00</b>
SBD-141SBR-A	14 x 2 SBR Reducer (D-I)	110	\$855.00
SBD-142SBR-A	14 x 2.5 SBR Reducer (D-I)	112	\$862.00
SBD-143SBR-A	14 x 3 SBR Reducer (D-I)	114	\$879.00
SBD-144SBR-A	14 x 4 SBR Reducer (D-I)	117	\$896.00
<b>SBD-144SBR</b>	<b>14 x 4 SBR Reducer (D-D)</b>	<b>117</b>	<b>\$975.00</b>
SBD-146SBR-A	14 x 6 SBR Reducer (D-I)	128	\$971.00
<b>SBD-146SBR</b>	<b>14 x 6 SBR Reducer (D-D)</b>	<b>130</b>	<b>\$1,030.00</b>
SBD-148SBR-A	14 x 8 SBR Reducer (D-I)	129	\$971.00
<b>SBD-148SBR</b>	<b>14 x 8 SBR Reducer (D-D)</b>	<b>130</b>	<b>\$1,055.00</b>

**NOTE: D = DPS Size, I = IPS Size**



**Category A**

Spigot x Bell Reducer (SBR) (Continued)

Model No.	Description	Wt. lbs.	List Price
SBD-1410SBR-A	14 x 10 SBR Reducer (D-I)	97	\$662.00
<b>SBD-1410SBR</b>	<b>14 x 10 SBR Reduc. (D-D)</b>	<b>105</b>	<b>\$678.00</b>
SBD-1412SBR-A	14 x 12 SBR Reducer (D-I)	104	\$712.00
<b>SBD-1412SBR</b>	<b>14 x 12 SBR Reduc. (D-D)</b>	<b>110</b>	<b>\$744.00</b>
SBD-161SBR-A	16 x 2 SBR Reducer (D-I)	167	\$1,130.00
SBD-162SBR-A	16 x 2.5 SBR Reduc. (D-I)	167	\$1,137.00
SBD-163SBR-A	16 x 3 SBR Reducer (D-I)	170	\$1,155.00
SBD-164SBR-A	16 x 4 SBR Reducer (D-I)	170	\$1,171.00
<b>SBD-164SBR</b>	<b>16 x 4 SBR Reduc. (D-D)</b>	<b>172</b>	<b>\$890.00</b>
SBD-166SBR-A	16 x 6 SBR Reducer (D-I)	175	\$1,222.00
<b>SBD-166SBR</b>	<b>16 x 6 SBR Reduc. (D-D)</b>	<b>177</b>	<b>\$1,230.00</b>
SBD-168SBR-A	16 x 8 SBR Reducer (D-I)	176	\$1,236.00
<b>SBD-168SBR</b>	<b>16 x 8 SBR Reduc. (D-D)</b>	<b>178</b>	<b>\$1,255.00</b>
SBD-1610SBR-A	16 x 10 SBR Reducer (D-I)	192	\$1,263.00
<b>SBD-1610SBR</b>	<b>16 X 10 SBR Reduc. (D-D)</b>	<b>195</b>	<b>\$879.00</b>
SBD-1612SBR-A	16 x 12 SBR Reducer (D-I)	130	\$912.00
<b>SBD-1612SBR</b>	<b>16 X 12 SBR Reduc. (D-D)</b>	<b>133</b>	<b>\$945.00</b>
<b>SBD-1614SBR</b>	<b>16 X 14 SBR Reduc. (D-D)</b>	<b>150</b>	<b>\$963.00</b>
SBD-186SBR-A	18 x 6 SBR Reducer (D-I)	261	\$2,800.00
<b>SBD-186SBR</b>	<b>18 x 6 SBR Reduc. (D-D)</b>	<b>261</b>	<b>\$2,180.00</b>
SBD-188SBR-A	18 x 8 SBR Reducer (D-I)	262	\$2,800.00
<b>SBD-188SBR</b>	<b>18 x 8 SBR Reduc. (D-D)</b>	<b>262</b>	<b>\$2,239.00</b>
SBD-1810SBR-A	18 x 10 SBR Reduc. (D-I)	293	\$2,491.00
<b>SBD-1810SBR</b>	<b>18 x 10 SBR Reduc. (D-D)</b>	<b>275</b>	<b>\$2,506.00</b>
SBD-1812SBR-A	18 x 12 SBR Reduc. (D-I)	295	\$2,706.00
<b>SBD-1812SBR</b>	<b>18 x 12 SBR Reduc. (D-D)</b>	<b>177</b>	<b>\$1,831.00</b>
<b>SBD-1814SBR</b>	<b>18 x 14 SBR Reduc. (D-D)</b>	<b>193</b>	<b>\$1,998.00</b>
<b>SBD-1816SBR</b>	<b>18 x 16 SBR Reduc. (D-D)</b>	<b>202</b>	<b>\$2,165.00</b>
SBD-206SBR-A	20 x 6 SBR Reducer (D-I)	295	\$3,469.00
<b>SBD-206SBR</b>	<b>20 x 6 SBR Reduc. (D-D)</b>	<b>295</b>	<b>\$2,516.00</b>
SBD-208SBR-A	20 x 8 SBR Reducer (D-I)	295	\$3,469.00
<b>SBD-208SBR</b>	<b>20 x 8 SBR Reduc. (D-D)</b>	<b>295</b>	<b>\$2,573.00</b>
SBD-2010SBR-A	20 x 10 SBR Reduc. (D-I)	310	\$3,159.00
<b>SBD-2010SBR</b>	<b>20 x 10 SBR Reduc. (D-D)</b>	<b>310</b>	<b>\$2,591.00</b>
SBD-2012SBR-A	20 x 12 SBR Reduc. (D-I)	410	\$3,209.00
<b>SBD-2012SBR</b>	<b>20 x 12 SBR Reduc. (D-D)</b>	<b>410</b>	<b>\$2,165.00</b>
<b>SBD-2014SBR</b>	<b>20 x 14 SBR Reduc. (D-D)</b>	<b>304</b>	<b>\$2,500.00</b>
<b>SBD-2016SBR</b>	<b>20 x 16 SBR Reduc. (D-D)</b>	<b>295</b>	<b>\$4,997.00</b>
<b>SBD-2018SBR</b>	<b>20 x 18 SBR Reduc. (D-D)</b>	<b>322</b>	<b>\$2,833.00</b>

**NOTE: D = DPS Size, I = IPS Size**



**Spigot x Bell Reducer (SBR) (Continued)**

Model No.	Description	Wt. lbs.	List Price
SBD-246SBR-A	24 x 6 SBR Reducer (D-I)	435	\$4,228.00
<b>SBD-246SBR</b>	<b>24 x 6 SBR Reducer (D-D)</b>	<b>435</b>	<b>\$4,285.00</b>
SBD-248SBR-A	24 x 8 SBR Reducer (D-I)	435	\$4,228.00
<b>SBD-248SBR</b>	<b>24 x 8 SBR Reducer (D-D)</b>	<b>435</b>	<b>\$4,310.00</b>
SBD-2410SBR-A	24 x 10 SBR Reducer (D-I)	450	\$3,918.00
<b>SBD-2410SBR</b>	<b>24 x 10 SBR Reduc. (D-D)</b>	<b>450</b>	<b>\$3,936.00</b>
SBD-2412SBR-A	24 x 12 SBR Reducer (D-I)	450	\$3,969.00
<b>SBD-2412SBR</b>	<b>24 x 12 SBR Reduc. (D-D)</b>	<b>450</b>	<b>\$4,003.00</b>
<b>SBD-2414SBR</b>	<b>24 x 14 SBR Reduc. (D-D)</b>	<b>475</b>	<b>\$3,259.00</b>
<b>SBD-2416SBR</b>	<b>24 x 16 SBR Reduc. (D-D)</b>	<b>475</b>	<b>\$5,589.00</b>
<b>SBD-2418SBR</b>	<b>24 x 18 SBR Reduc. (D-D)</b>	<b>475</b>	<b>\$3,425.00</b>
<b>SBD-2420SBR</b>	<b>24 x 20 SBR Reduc. (D-D)</b>	<b>475</b>	<b>\$3,592.00</b>



**Male Adapter (Bell X Male... MPT)**

Model No.	Description	Wt. lbs.	List Price
SB-14MA	2 IPS Bell x 2 MPT	3	\$56.00
SB-24MA	2.5 IPS Bell x 2 MPT	3	\$60.00
SB-25MA	2.5 IPS Bell x 2.5 MPT	5	\$63.00
SB-26MA	2.5 IPS Bell x 3 MPT	6	\$69.00
SB-34MA	3 IPS Bell x 2 MPT	5	\$77.00
SB-36MA	3 IPS Bell x 3 MPT	7	\$77.00
SB-43MA	4 IPS Bell x 3 MPT	10	\$85.00
SBD-43MA	4 DPS Bell x 3 MPT Adapter	10	\$89.00

**NOTE: D = DPS Size, I = IPS Size**  
**MPT = Male Pipe Thread**



**Category A**

**Plug**

Model No.	Description	Wt. lbs.	List Price
SBD-4P	4, Plug (D)	17	\$83.00
SBD-6P	6, Plug (D)	20	\$102.00
SBD-8P	8, Plug (D)	31	\$143.00
SBD-10P	10, Plug (D)	48	\$218.00
SBD-12P	12, Plug (D)	60	\$251.00
SBD-14P	14, Plug (D)	110	\$870.00
SBD-16P	16, Plug (D)	130	\$1,070.00
SBD-18P	18, Plug (D)	195	\$1,137.00
SBD-20P	20, Plug (D)	245	\$1,212.00
SBD-24P	24, Plug (D)	330	\$1,998.00



**Tapped Plug**

Model No.	Description	Wt. lbs.	List Price
SBD-404TP	4 x 2 FPT Plug (D)	14	\$118.00
SBD-406TP	4 x 3 FPT Plug (D)	14	\$118.00
SBD-604TP	6 x 2 FPT Plug (D)	17	\$139.00
SBD-606TP	6 x 3 FPT Plug (D)	17	\$139.00
SBD-804TP	8 x 2 FPT Plug (D)	28	\$180.00
SBD-806TP	8 x 3 FPT Plug (D)	28	\$180.00
SBD-1004TP	10 x 2 FPT Plug (D)	45	\$253.00
SBD-1006TP	10 x 3 FPT Plug (D)	45	\$253.00
SBD-1204TP	12 x 2 FPT Plug (D)	57	\$285.00
SBD-1206TP	12 x 3 FPT Plug (D)	57	\$285.00
SBD-1404TP	14 x 2 FPT Plug (D)	107	\$886.00
SBD-1406TP	14 x 3 FPT Plug (D)	107	\$886.00
SBD-1604TP	16 x 2 FPT Plug (D)	127	\$1,089.00
SBD-1606TP	16 x 3 FPT Plug (D)	127	\$1,089.00
SBD-1804TP	18 x 2 FPT Plug (D)	193	\$1,255.00
SBD-1806TP	18 x 3 FPT Plug (D)	193	\$1,255.00
SBD-2004TP	20 x 2 FPT Plug (D)	245	\$1,320.00
SBD-2006TP	20 x 3 FPT Plug (D)	245	\$1,320.00
SBD-2404TP	24 x 2 FPT Plug (D)	325	\$2,131.00
SBD-2406TP	24 x 3 FPT Plug (D)	325	\$2,131.00

**NOTE: D = DPS Size, FPT = Female Pipe Thread**



**Cap**

<b>Model No.</b>	<b>Description</b>	<b>Wt. lbs.</b>	<b>List Price</b>
SBD-4C	4, Cap (D)	50	\$243.00
SBD-6C	6, Cap (D)	70	\$352.00
SBD-8C	8, Cap (D)	100	\$470.00
SBD-10C	10, Cap (D)	140	\$803.00
SBD-12C	12, Cap (D)	178	\$912.00
SBD-14C	14, Cap (D)	295	\$1,972.00
SBD-16C	16, Cap (D)	365	\$2,506.00
SBD-18C	18, Cap (D)	450	\$2,892.00
SBD-20C	20, Cap (D)	590	\$3,302.00
SBD-24C	24, Cap (D)	780	\$4,422.00



**Tapped Cap**

<b>Model No.</b>	<b>Description</b>	<b>Wt. lbs.</b>	<b>List Price</b>
SBD-404TC	4 x 2 Tapped Cap (D-FPT)	50	\$256.00
SBD-406TC	4 x 3 Tapped Cap (D-FPT)	50	\$256.00
SBD-604TC	6 x 2 Tapped Cap (D-FPT)	70	\$364.00
SBD-606TC	6 x 3 Tapped Cap (D-FPT)	70	\$364.00
SBD-804TC	8 x 2 Tapped Cap (D-FPT)	100	\$473.00
SBD-806TC	8 x 3 Tapped Cap (D-FPT)	100	\$473.00
SBD-1004TC	10 x 2 Tapped Cap (D-FPT)	140	\$808.00
SBD-1006TC	10 x 3 Tapped Cap (D-FPT)	140	\$808.00
SBD-1204TC	12 x 2 Tapped Cap (D-FPT)	178	\$916.00
SBD-1206TC	12 x 3 Tapped Cap (D-FPT)	178	\$916.00
SBD-1404TC	14 x 2 Tapped Cap (D-FPT)	295	\$1,972.00
SBD-1406TC	14 x 3 Tapped Cap (D-FPT)	295	\$1,972.00
SBD-1604TC	16 x 2 Tapped Cap (D-FPT)	365	\$2,506.00
SBD-1606TC	16 x 3 Tapped Cap (D-FPT)	365	\$2,506.00
SBD-1804TC	18 x 2 Tapped Cap (D-FPT)	450	\$2,898.00
SBD-1806TC	18 x 3 Tapped Cap (D-FPT)	450	\$2,898.00
SBD-2004TC	20 x 2 Tapped Cap (D-FPT)	590	\$3,305.00
SBD-2006TC	20 x 3 Tapped Cap (D-FPT)	590	\$3,305.00
SBD-2404TC	24 x 2 Tapped Cap (D-FPT)	780	\$4,424.00
SBD-2406TC	24 x 3 Tapped Cap (D-FPT)	780	\$4,424.00

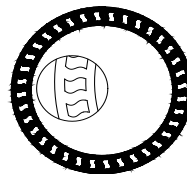
**NOTE: D = DPS Size, FPT = Female Pipe Thread**

**Category A**



**Links (Used with SBR, Cap & Plugs)**

<b>Model No.</b>	<b>Description</b>	<b>Wt. lbs.</b>	<b>List Price</b>
SB-LK1	2-2.5 Link	0.4	\$19.00
SB-LK2	3-8 Link	1.2	\$20.00
SB-LK3	10-12 Link	2.5	\$28.00
SB-LK4	14-16 Link	3.2	\$32.00
SB-LK9	18-24 Link	12	\$53.00
SBLK-B1	1/4-20 x 7/8 Bolt	Nil	\$4.00
SBLK-B2	5/16-18 x 1.25 Bolt	Nil	\$4.00
SBLK-B3	3/8-16 x 1.25 Bolt	Nil	\$4.00



**Gaskets (Fittings & Valves)**

<b>Model No.</b>	<b>Description</b>	<b>Wt. lbs.</b>	<b>List Price</b>
SBD-4G	4, Gasket (D)	0.3	\$17.00
SBD-6G	6, Gasket (D)	0.5	\$18.00
SBD-8G	8, Gasket (D)	0.7	\$23.00
SBD-10G	10, Gasket (D)	1.7	\$33.00
SBD-12G	12, Gasket (D)	2.3	\$45.00
SBD-14G	14, Gasket (D)	3.2	\$77.00
SBD-16G	16, Gasket (D)	3.8	\$105.00
SBD-18G	18, Gasket (D)	5.2	\$130.00
SBD-20G	20, Gasket (D)	5.6	\$153.00
SBD-24G	24, Gasket (D)	7.0	\$176.00



**Gaskets (Saddles)**

<b>Model No.</b>	<b>Description</b>	<b>Wt. lbs.</b>	<b>List Price</b>
SG-6MMG	RSST & RSDT Gasket	0.1	\$9.00
SG-9MMG	RSLS & RDLS Gasket	0.1	\$9.00

**NOTE: D = DPS Size**





**LHD-Series (Pipe to Fitting) Restraints**

Model No.	Description	Wt. lbs.	List Price
LHD-400	4, Pipe - Ftg JR (D)	6.0	\$95.00
LHD-600	6, Pipe - Ftg JR (D)	11	\$124.00
LHD-800	8, Pipe - Ftg JR (D)	14	\$166.00
LHD-1000	10, Pipe - Ftg JR (D)	25	\$224.00
LHD-1200	12, Pipe - Ftg JR (D)	39	\$298.00
LHD-1400	14, Pipe - Ftg JR (D)	76	\$446.00
LHD-1600	16, Pipe - Ftg JR (D)	82	\$540.00
LHD-1800	18, Pipe - Ftg JR (D)	90	\$884.00
LHD-2000	20, Pipe - Ftg JR (D)	120	\$1,042.00
LHD-2400	24, Pipe - Ftg JR (D)	136	\$1,096.00



**LBD-Series (Pipe to Pipe) Restraints**

Model No.	Description	Wt. lbs.	List Price
LBD-400	4, Pipe - Pipe JR (D)	15	\$222.00
LBD-600	6, Pipe - Pipe JR (D)	25	\$284.00
LBD-800	8, Pipe - Pipe JR (D)	31	\$364.00
LBD-1000	10, Pipe - Pipe JR (D)	54	\$529.00
LBD-1200	12, Pipe - Pipe JR (D)	84	\$669.00
LBD-1400	14, Pipe - Pipe JR (D)	166	\$1,015.00
LBD-1600	16, Pipe - Pipe JR (D)	179	\$1,209.00
LBD-1800	18, Pipe - Pipe JR (D)	212	\$2,025.00
LBD-2000	20, Pipe - Pipe JR (D)	288	\$2,339.00
LBD-2400	24, Pipe - Pipe JR (D)	320	\$2,450.00

**NOTE: Joint restraints include hardware.**

**Joint Restraint Torque Settings:**

**2 - 3" Sizes: 20 LBS.**

**4 - 8" Sizes: 50 LBS.**

**10 - 24" Sizes: 100 LBS.**

**NOTE: D = Ductile Pipe Size (DPS)**

**Category B**



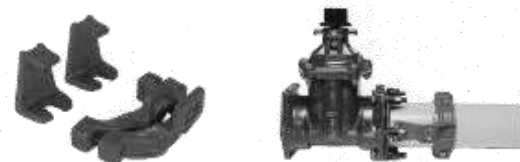
**LGKD-Series (Pipe to Fitting) Restraints For Push-On Gate Valves**

Model No.	Description	Wt. lbs.	List Price
LGKD-400	4, Pipe - Ftg, Valve JR (D)	15	\$210.00
LGKD-600	6, Pipe - Ftg, Valve JR (D)	27	\$244.00
LGKD-800	8, Pipe - Ftg, Valve JR (D)	30	\$280.00
LGKD-1000	10, Pipe - Ftg, Valve JR (D)	55	\$364.00
LGKD-1200	12, Pipe - Ftg, Valve JR (D)	68	\$439.00
LGKD-1400	14, Pipe - Ftg, Valve JR (D)	78	\$677.00
LGKD-1600	16, Pipe - Ftg, Valve JR (D)	94	\$942.00



**LGD-Series (Pipe to Pipe) Restraints For Push-On Gate Valves**

Model No.	Description	Wt. lbs.	List Price
LGD-400	4, Pipe - Pipe, Valve JR (D)	19	\$260.00
LGD-600	6, Pipe - Pipe, Valve JR (D)	33	\$328.00
LGD-800	8, Pipe - Pipe, Valve JR (D)	39	\$410.00
LGD-1000	10, Pipe - Pipe, Valve JR (D)	73	\$550.00
LGD-1200	12, Pipe - Pipe, Valve JR (D)	103	\$690.00
LGD-1400	14, Pipe - Pipe, Valve JR (D)	180	\$1,051.00
LGD-1600	16, Pipe - Pipe, Valve JR (D)	195	\$1,245.00

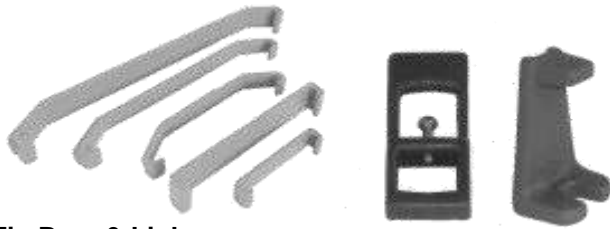


**LMJD-Series (Pipe to Valve) Restraints for MJ or Flange Valve (one end only)**

Model No.	Description	Wt. lbs.	List Price
LMJD-400	4, Pipe - MJ, Valve JR (D)	9	\$153.00
LMJD-600	6, Pipe - MJ, Valve JR (D)	14	\$184.00
LMJD-800	8, Pipe - MJ, Valve JR (D)	17	\$224.00
LMJD-1000	10, Pipe - MJ, Valve JR (D)	28	\$284.00
LMJD-1200	12, Pipe - MJ, Valve JR (D)	42	\$355.00
LMJD-1400	14, Pipe - MJ, Valve JR (D)	78	\$571.00
LMJD-1600	16, Pipe - MJ, Valve JR (D)	86	\$678.00

**NOTE: D = Ductile Pipe Size (DPS)**

**Category B**



**Tie-Bars & Links  
(Individual Parts, Not Sets)**

Model No.	Description	Wt. lbs.	List Price
LTB-100	2-8, LB-Series Tie Bar	1.5	\$19.00
LTB-200	10-12, LB-Series Tie Bar	2.7	\$35.00
LTB-224	2-4, Gate Valve Tie Bar	3.4	\$35.00
LTB-228	6-8, Gate Valve Tie Bar	5.5	\$44.00
LTB-1012	10-12, Gate Valve Tie Bar	12	\$62.00
LS-MJ	Link, MJ-Series	1.6	\$28.00
SB-LK6	2- 3 Link, LGK-Series	1.1	\$23.00
SB-LK7	4-12 Link, LGK-Series	2.4	\$30.00

**Hardware: Bolt, Nut, Washer Sets  
(304 Series Stainless Steel)**

Model No.	Description	Wt. lbs.	List Price
HD-J1-S	3/8-16 x 2.5, SS Hex	0.1	\$5.00
HD-J2-S	1/2-13 x 3, SS Hex	0.1	\$8.00
HD-J3-S	1/2-13 x 3.5, SS Hex	0.1	\$9.00
HD-J4-S	1/2-13 x 4, SS Hex	0.1	\$10.00
HD-J5-S	5/8-11 x 5.5, SS Hex	0.3	\$18.00
HD-J6-S	1/4-20 x 7/8, SS Hex	0.1	\$5.00
HD-J7-S	7/16-18 x 1, SS Hex	0.2	\$8.00
HD-J8-S	3/8-16 x 2.5, SS CR	0.1	\$10.00
HD-J9-S	1/2-13 x 3.5, SS CR	0.1	\$11.00
HD-J10-S	5/8-11 x 5.5, SS CR	0.3	\$20.00
HD-J11-S	5/16-18 x 2, HSLA Hex	0.1	\$5.00

**NOTE: 316 stainless steel is available.  
Please contact Leemco for pricing.**

**TOOLS**



**Hole Saw (1-1/2" Saddle Port)**

Model No.	Description	Wt. lbs.	List Price
HOLESAW15	1-1/2, Bi-Metal Hole Saw	1	\$53.00
PILOTBIT	1/4, Pilot Bit (required)	1	\$20.00
DEBURTOOL	Deburring Tool	1	\$66.00



**Torque Wrench (20-150 LBS.)**

Model No.	Description	Wt. lbs.	List Price
TWRENCH	Torque Wrench 20-150 LBS, 1/2 Drive	4	\$197.00



**Torque Rating for Saddles: 20-25 LBS.**

**RSST-Series, Threaded Range Saddles (DPS)  
Stainless Steel SINGLE Straps**

Model No.	Description	Wt. lbs.	List Price
RSST-402D	4 x 1 FPT Saddle	4.5	\$70.00
RSST-403D	4 x 1.5 FPT Saddle	4.5	\$70.00
RSST-404D	4 x 2 FPT Saddle	4.5	\$59.00
RSST-602D	6 x 1 FPT Saddle	6.0	\$77.00
RSST-603D	6 x 1.5 FPT Saddle	6.0	\$77.00
RSST-604D	6 x 2 FPT Saddle	6.0	\$66.00
RSST-802D	8 x 1 FPT Saddle	6.5	\$84.00
RSST-803D	8 x 1.5 FPT Saddle	6.5	\$84.00
RSST-804D	8 x 2 FPT Saddle	6.5	\$73.00
RSST-1002D	10 x 1 FPT Saddle	7.5	\$92.00
RSST-1003D	10 x 1.5 FPT Saddle	7.5	\$92.00
RSST-1004D	10 x 2 FPT Saddle	7.5	\$82.00
RSST-1202D	12 x 1 FPT Saddle	8.0	\$106.00
RSST-1203D	12 x 1.5 FPT Saddle	8.0	\$106.00
RSST-1204D	12 x 2 FPT Saddle	8.0	\$96.00



**"SPECIAL ORDER"  
Allow 60-90 Days**

**Stainless Steel Flanged Ball Valve, 316 SS**

Model No.	Description	Wt. lbs.	List Price
LBF22SS316	2, Flange Ball Valve, 316 SS	35	\$392.00
LBF2525SS316	2.5, Flange Ball Valve, 316 SS	50	\$558.00
LBF33SS316	3, Flange Ball Valve, 316 SS	58	\$763.00
LBF44SS316	4, Flange Ball Valve, 316 SS	76	\$1,040.00
LBF66SS316	6, Flange Ball Valve, 316 SS	128	\$2,596.00
LBF88SS316	8, Flange Ball Valve, 316 SS	205	\$4,858.00

**Ball valve pressure rating:  
1000 PSI CWP (cold working pressure), WOG  
500 PSI SWP (steam working pressure)**

**NOTE: "Special Order" Please allow 60-90 days.**



**Category C**

**Torque Rating for Saddles: 20-25 LBS.**

**RSDT-Series, Threaded Range Saddles (DPS)  
Stainless Steel DOUBLE Straps**

Model No.	Description	Wt. lbs.	List Price
RSDT-402D	4 x 1 FPT Saddle	6.0	\$97.00
RSDT-403D	4 x 1.5 FPT Saddle	6.0	\$97.00
RSDT-404D	4 x 2 FPT Saddle	6.0	\$86.00
RSDT-602D	6 x 1 FPT Saddle	7.5	\$115.00
RSDT-603D	6 x 1.5 FPT Saddle	7.5	\$115.00
RSDT-604D	6 x 2 FPT Saddle	7.5	\$104.00
RSDT-802D	8 x 1 FPT Saddle	8.0	\$128.00
RSDT-803D	8 x 1.5 FPT Saddle	8.0	\$128.00
RSDT-804D	8 x 2 FPT Saddle	8.0	\$117.00
RSDT-1002D	10 x 1 FPT Saddle	9.0	\$139.00
RSDT-1003D	10 x 1.5 FPT Saddle	9.0	\$139.00
RSDT-1004D	10 x 2 FPT Saddle	9.0	\$129.00
RSDT-1202D	12 x 1 FPT Saddle	9.5	\$164.00
RSDT-1203D	12 x 1.5 FPT Saddle	9.5	\$164.00
RSDT-1204D	12 x 2 FPT Saddle	9.5	\$153.00
RSDT-1206D	12 x 3 FPT Saddle	9.5	\$162.00
RSDT-1404D	14 x 2 FPT Saddle	12.0	\$176.00
RSDT-1406D	14 x 3 FPT Saddle	12	\$183.00
RSDT-1604D	16 x 2 FPT Saddle	13.5	\$204.00
RSDT-1606D	16 x 3 FPT Saddle	13.5	\$212.00

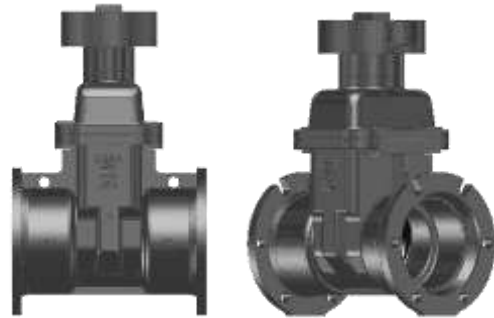
**Category D**



**Mainline Gate Valve (Flange x Flange)**

Model No.	Description	Wt. lbs.	List Price
LMV-11FF	2 x 2 Flange x Flange	35	\$491.00
LMV-22FF	2.5 x 2.5 Flange x Flange	50	\$556.00
LMV-33FF	3 x 3 Flange x Flange	58	\$628.00
LMV-44FF	4 x 4 Flange x Flange	76	\$850.00
LMV-66FF	6 x 6 Flange x Flange	128	\$1,079.00
LMV-88FF	8 x 8 Flange x Flange	205	\$1,302.00
LMV-1010FF	10 x 10 Flange x Flange	395	\$2,079.00
LMV-1212FF	12 x 12 Flange x Flange	605	\$2,537.00
LMV-1414FF	14 x 14 Flange x Flange	890	\$7,190.00
LMV-1616FF	16 x 16 Flange x Flange	1250	\$9,085.00

**NOTE: Flange bolt, nut & gasket kits are sold separately. Please contact Leemco for pricing.**



**Mainline Gate Valve (MJ x MJ)**

Model No.	Description	Wt. lbs.	List Price
LMV-33MM	3 x 3 MJ x MJ	48	\$471.00
LMV-44MM	4 x 4 MJ x MJ	72	\$550.00
LMV-66MM	6 x 6 MJ x MJ w/ SON	128	\$929.00
LMV-88MM	8 x 8 MJ x MJ	170	\$1,386.00
LMV-1010MM	10 x 10 MJ x MJ	257	\$1,975.00
LMV-1212MM	12 x 12 MJ x MJ	383	\$3,203.00
LMV-1414MM	14 x 14 MJ x MJ	575	\$7,256.00
LMV-1616MM	16 x 16 MJ x MJ	768	\$9,622.00
LMV-WH3-4	Round Wheel Handle, 3-4"	18	\$53.00
LMV-WH6-8	Round Wheel Handle, 6-8"	25	\$79.00
LMV-WH10-16	Round Wheel Handle, 10-16"	35	\$105.00

**NOTE: Mechanical joint accessory kits are sold separately. Please contact Leemco for pricing.**

**NOTE: All mechanical joint valves come standard with 2" square operating nuts. For round wheel handle option, please add the price above to the valve price and note wheel handle option on purchase order.**

**Specifications****Fitting Specification:**

Fittings shall be ductile iron, slanted, deep bell, gasket style made in accordance with ASTM A-536, Grade 65-45-12 & AWWA C153. Fittings shall have four lugs to accommodate joint restraints and other fittings. Bell section shall allow 5-degree freedom of pipe deflection within the bell end. All gaskets shall be manufactured of high grade EPDM rubber and shall be rib-enforced "U-Cup" design to seal and assist in restraining pipe at all pressures. All IPS, DPS & DIN fittings shall have Epoxy Coating as standard finish. Epoxy Coating on interior & exterior surfaces of fittings shall be fusion bonded epoxy, 10-12 mil thickness. The epoxy coated fittings shall pass 90-Day immersion tests per CSA Z245.20-98. All fittings shall be manufactured by Leemco, Inc., U.S.A.

**Joint Restraint Specification:**

All changes of directions and reductions shall be mechanically restrained. Additional adjacent joints shall also be restrained as per manufactures recommendations. Joint Restraints shall be ductile iron and made in accordance with ASTM A-536, Grade 65-45-12 & AWWA C153. All Restraints shall have blunt cast serrations. Machine threaded restraints shall not be allowed. All restraints shall have Epoxy Coating as standard finish. Epoxy Coating shall be fusion bonded epoxy, 10-12 mil thickness. The epoxy coated restraints shall pass 90-Day immersion tests per CSA Z245.20-98. All Joint Restraints shall be manufactured by Leemco, Inc., U.S.A.

**Mainline Gate Valve Specification:**

All mainline valves shall be resilient wedge and conform to AWWA C153 standards. Material shall be ductile iron per ASTM A-536, Grade 65-45-12. Epoxy coating on all interior and exterior surfaces shall be fusion bonded epoxy, 12-14 mil thickness. The epoxy coating shall pass 90-Day immersion tests per CSA Z245.20-98. Gate valves shall be available in flanged and mechanical joint models. Valves shall have a shroud around the 2" operating nut to accept pipe sleeve which provides dirt free access to actuate the valve. All mainline gate valves shall be manufactured by Leemco, Inc. U.S.A.

**Saddle Specification:**

All Saddle bodies shall be constructed of ductile iron per ASTM A-536, Grade 65-45-12, AWWA C153 standards. RSST, RSDT-Series straps and hardware shall be 304 stainless steel. Saddle gasket shall be EPDM rubber per ANSI/AWWA C111/A21.11 standards. Epoxy coating shall be 10-12 mil thickness to protect against corrosive soils. All saddles shall be manufactured by Leemco, Inc. U.S.A.

**Stainless Steel Ball Valve Specification:**

All flanged ball valves shall be constructed of 316 stainless steel. Ball valves are rated for 1000psi CWP and 500psi SWP. All ball valves shall be manufactured by Leemco, Inc. U.S.A.

**Epoxy Coating Specification:**

All interior and exterior surfaces of fittings and valves shall be fusion bonded Leem-Guard epoxy, consisting of thermoplastic powder formulated specifically for underground piping components and shall conform to the requirements of CSA Z245.20-20 and NSF 61 for water services. The average mil thickness shall be 10-12; the minimum thickness shall be 5 mils. The epoxy coat shall be electro-statically applied to chemically etch and heated (460 degree F) substrate surfaces, cured and quenched. The epoxy coated products shall pass 90-Day Immersion tests per CSA Z245.20-98. Care must be taken not to chip or damage coated products, prior to, during and after installation.

**Please visit our website @ [www.Leemco.com](http://www.Leemco.com) to get the latest product specifications**

**Installation Guide****Before you begin...**

- Inspect all products to insure rubber gaskets are installed properly
- Inspect all products to insure correct amount of bolts, nuts and washers are included
- Inspect all products for any noticeable cracks, pinholes or visual defects before installing

**Tools required...**

- Torque wrench
- Socket wrenches and open end wrenches
- Pipe beveller
- Seal Lube or gasket lubricant
- W-D 40 or steel thread lubricant



## Installation Guide

### Fitting and Push-on Valve Installation

#### Gasket Insertion

Leemco gaskets are ribbed (U-Cup) design. The gasket nests in the recess (gasket groove) of the bell end with the front of the gasket smooth. The back of the gasket has series of notches or ribs.

#### Field Cut Pipe

The outside edge of the cut pipe must be beveled and smoothed as any sharp corner may cause gasket damage. Straight alignment is especially important when assembling field cut pipe.

#### Spigot x Bell Joints

Lubricant must be applied to the installed gasket to reduce friction and avoid gasket damage. Also apply a thin coat of lubricant to the beveled portion of the plain end of pipe or the spigot end of the fitting. Commercially available push-on joint lubricants are non-toxic, odorless, tasteless and do not support bacteria. "Seal Lube" SK#87710, offered by IPS Weldon Corp. is one such lubricant.

#### Joining

Small diameter pipe can be inserted by pushing the plain end into bell socket of fitting with a long bar. Larger diameter pipe require the use of a backhoe, jack or come-a-long tool.



### Saddle Installation

Clean pipe surface where saddle gasket will seat against pipe. Inspect saddle to insure that the saddle gasket is not ripped or damaged. Install saddle boss (top) of saddle onto the pipe and install bottom stainless steel strap and tighten nuts to 20-25 ft-lbs of torque. Make sure to tighten nuts evenly so stainless steel strap is not crooked. Drill hole through the pipe (access is through the saddle outlet). The port size is determined by the Irrigation Consultant or the pipe manufacture. With 2" outlet saddles, the port size is in the range of 1" to 1.25" diameter. With smaller diameter pipe (3" and 4"), larger port sizes will take away too much pipe material and weaken the pipe at the port location. Please contact your Irrigation Consultant on proper port sizes.



Please refer to our website @ [www.Leemco.com](http://www.Leemco.com) for complete Installation Guides.

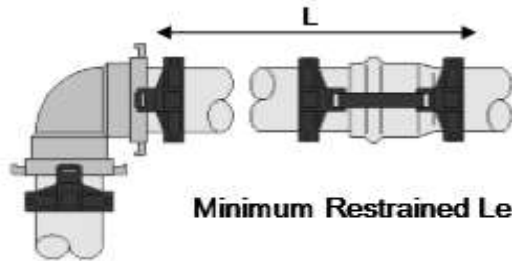
Guides are available in English, Spanish and Mandarin languages.

**Installation Guide**

**Design Criteria...**

All tees, Bends, Reducers and End Caps should be restrained using LH-Series restraints. A certain number of joints before and after a restrained fitting may also require joint restraints as set forth in Tables below.

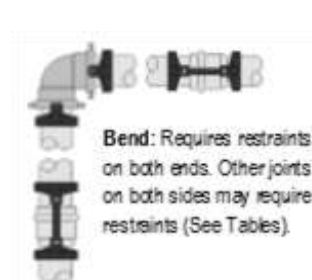
Below Tables establish values for the minimum length of pipe ("L") within which other joints must be restrained. Values (in feet) are based on 125 PSI line pressure, 24" of cover, Sandy-Clay type soil, and a safety factor of 2. For other line pressures, multiply the "L" values by 125.



**Minimum Restrained Length (L) in feet**

**NOTE:** Step Reduction Example:  
1 Step (8x6), 2 Step (8x4), 3 Step (8x3)

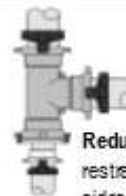
Pipe-Pipe Restraints for IPS & DPS pipe... minimum restrained length ("L") in feet											
Pipe Size	Pipe OD IPS	Pipe OD DPS	Bends				Step Reduction			Dead End	Gate Valve
			11	22	45	90	1	2	3		
2"	2.38		1	1	2	6				19	10
2.5"	2.88		1	2	4	9	4			23	12
3"	3.50		2	3	6	11	8	10		30	15
4"	4.50	4.80	2	4	9	20	14	20	31	45	23
6"	6.63	6.90	3	6	13	29	30	40	53	63	31
8"	8.63	9.05	4	8	15	38	33	55	63	75	38
10"	10.75	11.10	5	9	19	45	36	56	75	96	48
12"	12.75	13.20	5	10	21	53	38	60	83	112	56
14"		15.30	6	11	24	58	40	62	86	130	62
16"		17.40	6	13	27	65	42	64	88	146	73
18"		19.50	7	14	29	69	44	70	90	162	81
20"		21.60	8	15	32	76	46	80	92	178	89
24"		25.80	9	18	37	88	63	90	114	209	105



**Bend:** Requires restraints on both ends. Other joints on both sides may require restraints (See Tables).



**Standard Tee:** Requires restraint on branch side only. Use 90-degree bend for additional joints. (See Tables)



**Reducing Tee:** Requires restraints on all three sides. (See Tables)



**Reducers:** Must be restrained on both ends. Additional joints on the larger end are required. (See Tables)



**Dead End:** Adjacent joint restraints are required on upstream joints. (See Tables)



**Installation Guide**

Joint Restraint - Hardware Size and Torque Requirements							LPP-Series Restraints Only			
Pipe Size	Pipe OD IPS	Pipe OD DPS	No. of Bolts	Bolt Size	Torque Ft-Lb	LB-Series OD (Inches)	LPP-Series OD (Inches)	LPP-Series No. of Bolts	LPP-Series Bolt Size	Torque Ft-Lb
2"	2.38		2	3/8 - 16 x 2.5	20	5.0	5.0	2	3/8 - 16 x 2.5	20
2.5"	2.88		2	3/8 - 16 x 2.5	20	5.5	5.5	2	3/8 - 16 x 2.5	20
3"	3.50		2	3/8 - 16 x 2.5	20	6.5	6.5	2	3/8 - 16 x 2.5	20
4"	4.50	4.80	2	1/2 - 13 x 3.5	50	7.5	7.5	2	1/2 - 13 x 3.5	50
6"	6.63	6.90	2	1/2 - 13 x 3.5	50	10.0	10.5	2	1/2 - 13 x 3.5	50
8"	8.63	9.05	4	1/2 - 13 x 4.0	50	12.5	15.0	2	1/2 - 13 x 4.0	50
10"	10.75	11.10	4	5/8 - 11 x 5.5	100	15.0	17.0	2	1/2 - 13 x 4.0	50
								2	5/8 - 11 x 5.5	100
12"	12.75	13.20	4	5/8 - 11 x 5.5	100	17.0	19.5	2	1/2 - 13 x 4.0	50
								4	5/8 - 11 x 5.5	100
14"		15.30	4	5/8 - 11 x 5.5	100	29.0				
16"		17.40	4	5/8 - 11 x 5.5	100	31.0				
18"		19.50	2	1/2 - 13 x 4.0	50					
			4	5/8 - 11 x 5.5	100					
20"		21.60	2	1/2 - 13 x 4.0	50					
			4	5/8 - 11 x 5.5	100					
24"		25.80	2	1/2 - 11 x 4.0	50					
			4	5/8 - 11 x 5.5	100					

**Parts...**



**LTB-Bars**

- LTB-100... used with 2" - 8" LB-Series (9"L x 1" H)
- LTB-200... used with 10" - 24" LB-Series (16"L x 1"H)
- LTB-224... used with 2" - 4" LGK/LG-Series (18"L x 3.5"H)
- LTB-228... used with 6" - 8" LGK/LG-Series (24"L x 3.5"H)
- LTB-1012... used with 10" - 12" LGK/LG-Series (32"L x 3.5"H)



**SB-LK6 and SB-LK7**

- SB-LK6... used with 2" - 8" LGK-Series
- SB-LK7... used with 10" - 12" LGK-Series



**LS-MJ**

- LS-MJ... used with 2" - 12" LMJ-Series

***For IPS & DIN/METRIC Products...***

**PLEASE VISIT: [WWW.LEEMCO.COM](http://WWW.LEEMCO.COM)**



**STAINLESS STEEL FITTINGS**



**LATERAL ANGLE VALVES**



**STAINLESS STEEL BALL & GATE VALVES**



**LATERAL GLOBE VALVES**



**SELF-RESTRAINED FITTINGS**



**HDPE PRODUCTS**

**NOTES:**

[Redacted content]

**Conditions of Sale****TERMS:**

Net 30 days

**FREIGHT:**

FOB Leemco warehouses; Prepaid freight \$2,000 net (United States only)

**CLAIMS:**

Shipping errors must be reported to Leemco within 15 days of receipt. Claims for damages or shortages in transit should be handled with the carrier by the consignee.

**RETURN POLICY:**

All product returns must have an approved RGA (Returned Goods Authorization) form signed by a Leemco Representative. This form can be downloaded from the Leemco website @ [www.Leemco.com](http://www.Leemco.com). No credit shall be issued for returns without this information. Leemco will not issue a check or cash refund for the returned goods amount. Credit will be issued to the Distributors account and this dollar amount will be deducted from all future purchases, until a zero balance is achieved.

All product returns shall be subject to a twenty percent (20%) refurbishing charge. The Purchaser shall be responsible for shipment of all Leemco returned goods; freight prepaid to Leemco factory located at 360 S. Mount Vernon Ave, Colton, CA. 92324. This shall include, but not limited to all packing, handling, shipping and the cost thereof for all Leemco products. In the event of any portion of the original order had been shipped freight allowed by Leemco is returned, the Purchaser shall be responsible for the cost of the outgoing freight charges, as well as handling charges related to the returned goods. The handling charges shall be calculated as the sale ability and refurbishing cost of the returned product.

Fittings returned without links, gaskets, bolts, etc. shall be charged for the cost of the missing items and associated labor including a handling charge. It is the responsibility of the Distributor, Dealer or Contractor to inspect all received goods and immediately notify Leemco of any defects or deficiencies. The Distributor Dealer or Contractor has 30 days from the date of the original Leemco invoice to report missing items and seek remedies immediately. Goods badly damaged or construed to have excessive rust, and mud deposits shall be charged a refurbishing fee.

**Suitability:**

Ductile iron products are not suitable for exposure to saline (ocean) water or injection of chemical fertilizers with acidity lower than 6.3 PH. Although Epoxy coatings will protect ductile iron products against chemical attacks, care must be taken during installation of Epoxy coated products not to nick the coating and expose bare metal. Leemco, Inc. shall not warrant its products for exposure to acetic and aggressive soils without carefully applied and installed protective coating. The following warranty applies only to products that comply with Leemco, Inc. application and requirements as stated herein.

**Warranty:**

Leemco, Inc. warrants its products to be free of defects in materials and workmanship when purchased from an authorized distributor for a period of five (5) years and used for normal use. (refer to Suitability stipulations above) If the constituent becomes defective during the Limited Warranty period, Leemco shall replace it at no charge to the customer. Seller shall not be liable for the costs of any repairs or work done or materials purchased by the Buyer because of defective items, unless in writing by the seller. IN NO EVENT SHALL SELLER BE LIABLE FOR INCIDENTAL OR CONSEQUENTIAL DAMAGES unless applicable federal law forbids exclusions of incidental or consequential damages. Under special purchase agreements, Leemco offers extended warranty programs; for details please contact the factory. View complete Leemco Warranty Information @ [www.Leemco.com](http://www.Leemco.com)

**Disclaimer:**

ALL PRIOR IMPLIED OR WRITTEN WARRANTIES ARE NO LONGER IN EFFECT. NO PERSON, AGENT, DISTRIBUTOR, DEALER, SERVICE FACILITY OR COMPANY IS AUTHORIZED TO CHANGE, MODIFY OR AMEND THE TERMS OF THIS LIMITED WARRANTY. LEEMCO SHALL NOT BE LIABLE TO THE PURCHASER, CONTRACTOR, AND OWNER OF ANY OTHER PERSON FOR ANY INCIDENTAL OR CONSEQUENTIAL DAMAGES OR LOSS OF PROFIT RESULTING FROM ANY DEFECT IN OR MALFUNCTION OF A LEEMCO PRODUCT. REFER TO "SUITABILITY", ABOVE FOR CLARIFICATIONS.

**Price/Offer:**

Price subject to change without notice. Possession of price sheet does not constitute an obligation to sell. Offer to sell at the sole discretion of LEEMCO, INC. and is not implied by possession of this or other LEEMCO price lists.